



Dongguan Hinen New Energy Technology Co., Ltd

Add: No.24 Dongkang Road, Dalingshan Town,
Dongguan City, Guangdong, China
Tel: +86 (769) 89920666 ext 8318
Email: service@hinen.com
Website: <https://www.hinen.com>

Hinen Germany

Email: sales.de@hinen.com(Sales Inquiries)
service.de@hinen.com(Technical support)
Website: <https://de.hinen.com>

Hinen Australia Pty. Ltd.

Add: Suite 503,Level 5, Tenancy 3,107 Mount Street, North Sydney
Email: service@hinen.com.au
Tel: +61 2 7258 1272
Website: <https://au.hinen.com>

Europe HL Hinen B.V.

Add: John M. Keynesplein 1, 1066EP Amsterdam
Email: service@hinen.com
Tel: +86 (769) 89920666 ext 8318
Website: <https://nl.hinen.com>

Hinen Energy Eastern Europe

Add: Wąska 95, 05-806 Sokołów Poland
Email: biuro@hinen.com
Tel: +48 606 807 712
Website: <https://pl.hinen.com>

Hinen South Africa (Pty) Ltd

Add: Ground floor, Block B, 100 West Street,
Sandton.Johannesburg 2196, South Africa
Email: SAfrica@hinen.com
Tel: +27 10 449 2306
Website: <https://za.hinen.com>

Hinen Technology East Africa LIMITED

Add: No. 6, Kirichwa Lane Court, next to
GreenhouseMall, Ngong Road, Nairobi, Kenya
Email: EAfrica@hinen.com
Tel: +254789688999
Website: <https://ke.hinen.com>

Hinen West Africa LIMITED

Add: 25A-2 Talabi St, Ogba, Lagos 101233, Lagos, Nigeria
Email: WAfrica@hinen.com
Tel: +86 (769) 89920666 ext 8318
Website: <https://ng.hinen.com>



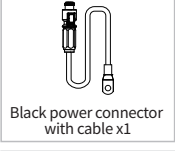
SINGLE-PHASE HYBRID INVERTER

H3000-EU/H3600-EU/H4000-EU/H4600-EU/H5000-EU/H6000-EU

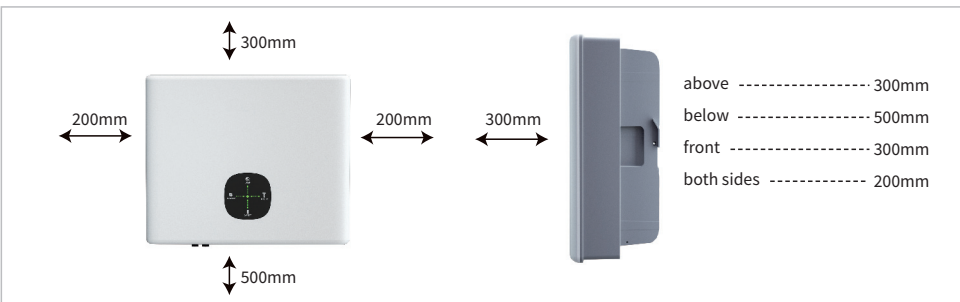
Quick Installation Guide

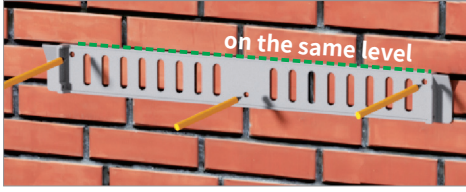

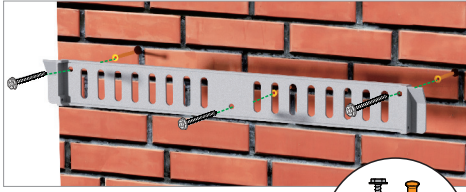
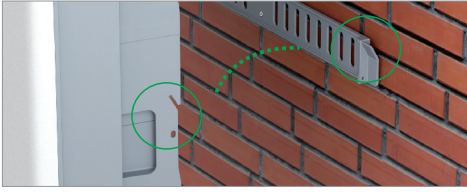

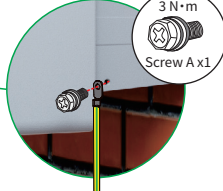
1. Packing List

Upon receiving the hybrid inverter, please check if any of the components as shown below are missing or broken.

 Inverter x1	 Wall-mounted bracket x1	 Wifi module x1	 Positive PV Plug x2	 Negative PV Plug x2
 COM connector x1	 Battery positive plug x1	 Battery negative plug x1	 Grid plug x1	 EPS plug x1 Phillips Screws x4 Protective Cover x1
 Short Screw A x1 Long Screw B x2	 Expansion bolts x3	 User Manual x1 Quick Installation Guide x1	 CT x1	 PV Disassembly Tool x1
 Battery Communication cable x1	 SC25-8 Copper Terminal x2	 Red DC Power Cable x1	 Black DC Power Cable x1	 Red power connector with cable x1
 Black power connector with cable x1	 Tubular terminal x3	**  Single-phase meter x1	**  Cord end terminal x6	**  Meter communication cable x1
**  Battery thermal sensor x1	<p>* The images shown here are for reference. The actual product and quantity are based on delivery.</p> <p>** Optional. Types of equipment to be applied vary in different regions. Please consult local customer service for equipment type selection.</p>			

2. Mounting

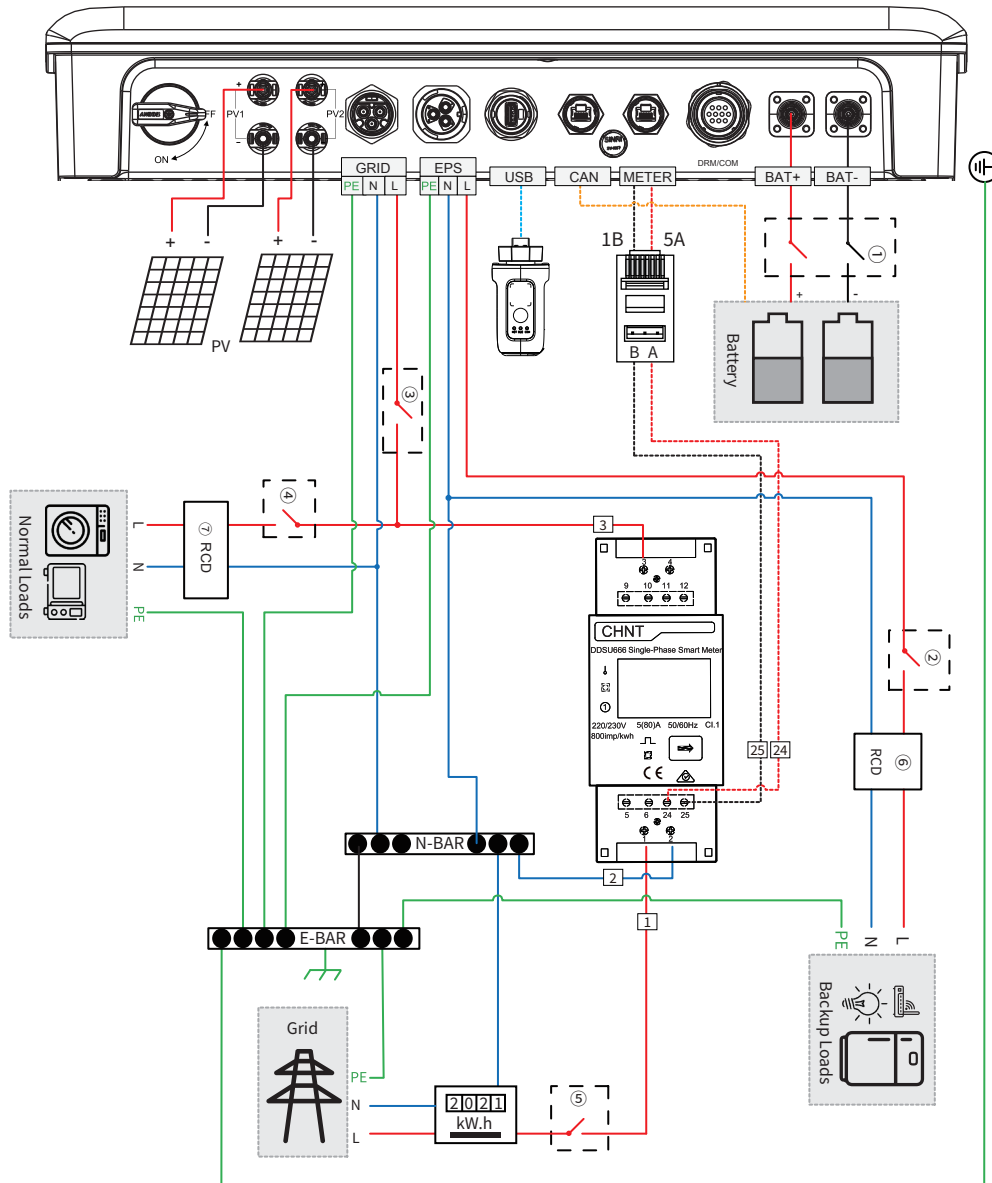


- Wall mountings are placed horizontally on the installation wall, and making marking points with a marker.
 
- Use impact drill to drill holes of 8mm in diameter and 80mm in depth according to the marking points.
 
- Put the expansion tube into the wall hole and use the standard self-tapping to lock the wall mountings.
 
- Two people are needed to hang the inverter on the wall mountings.
 
- Use the standard security screws to lock both sides of the wall mountings.
 
- Connect the PE cable to the grounding plate at the grid side.
 

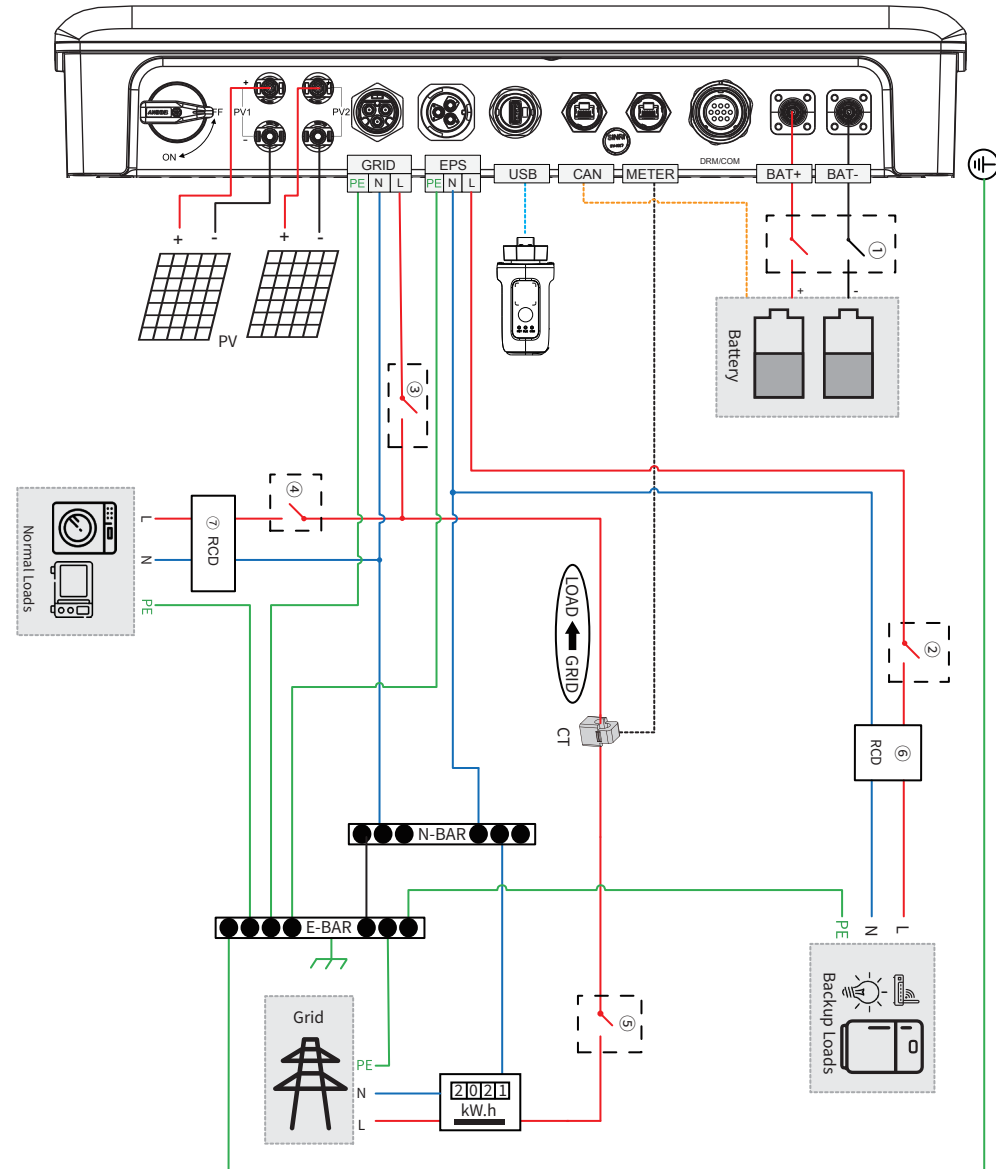
System Connection Diagrams

Note: According to Australian safety regulations, the neutral wires of the on-grid side and the back-up side must be connected together. Otherwise, the back-up function will not operate correctly.

This diagram is an example for an application that neutral connects with the PE in a distribution box (with smart meter). Applicable in countries such as Australia, New Zealand, South Africa, etc. Please follow the local wiring regulations!

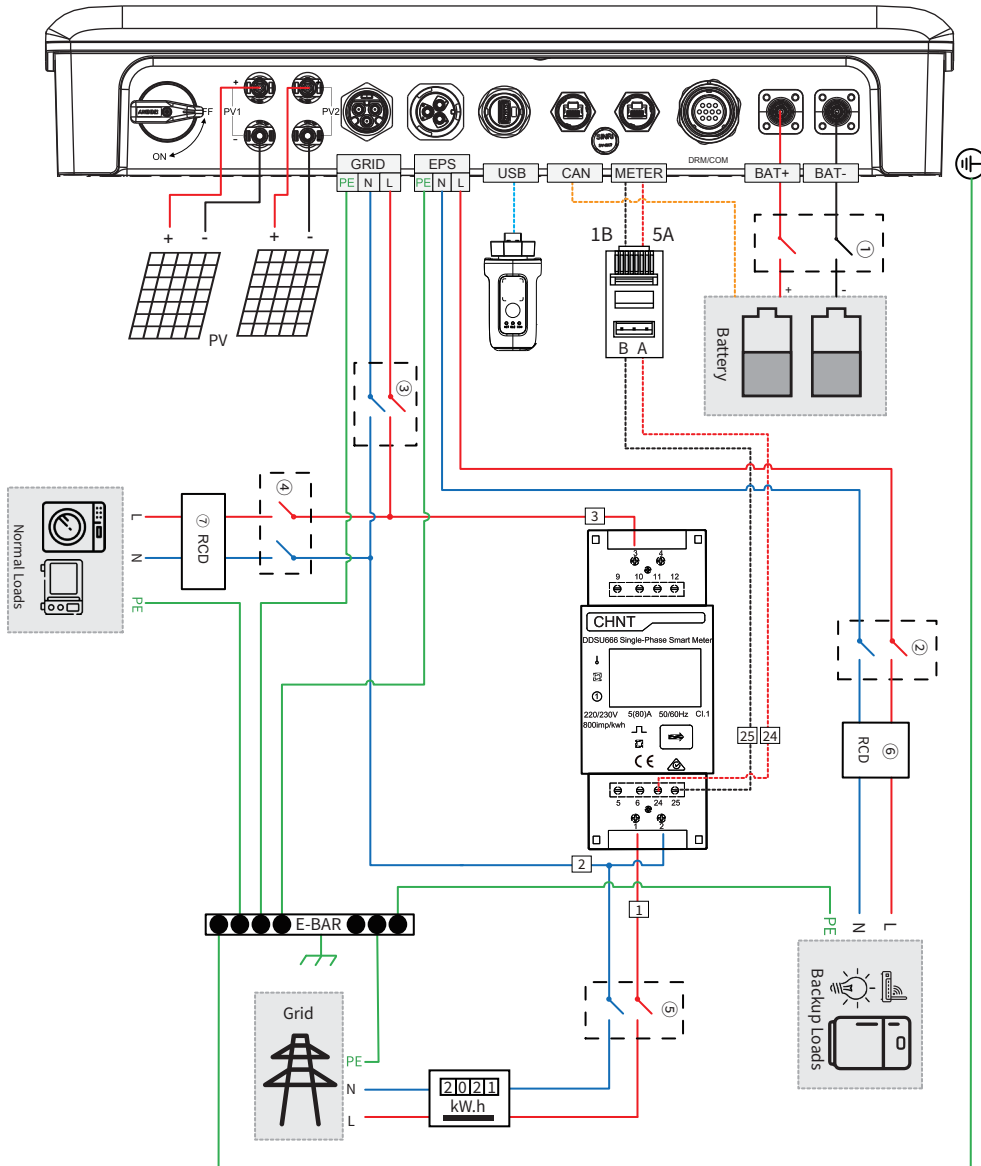


This diagram is an example for an application that neutral connects with the PE in a distribution box (with CT). Applicable in countries such as Australia, New Zealand, South Africa, etc. Please follow the local wiring regulations!



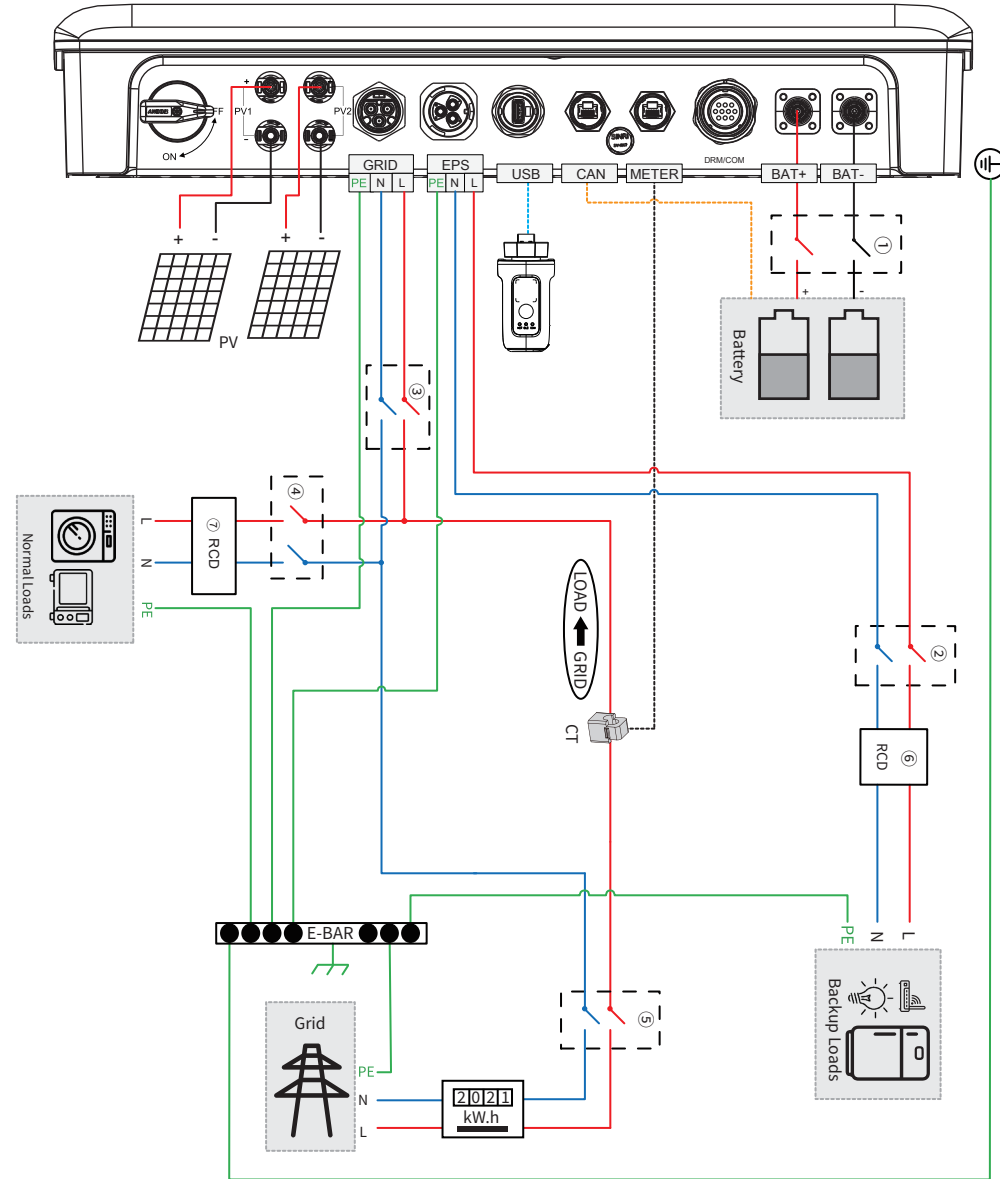
This diagram is an example for grid systems without special requirements on electrical wiring connection (with smart meter).

Note: The back-up PE line and earthing bar must be grounded properly and effectively. Otherwise the back-up function may be abnormal when the grid fails.



This diagram is an example for grid systems without special requirements on electrical wiring connection (with CT).

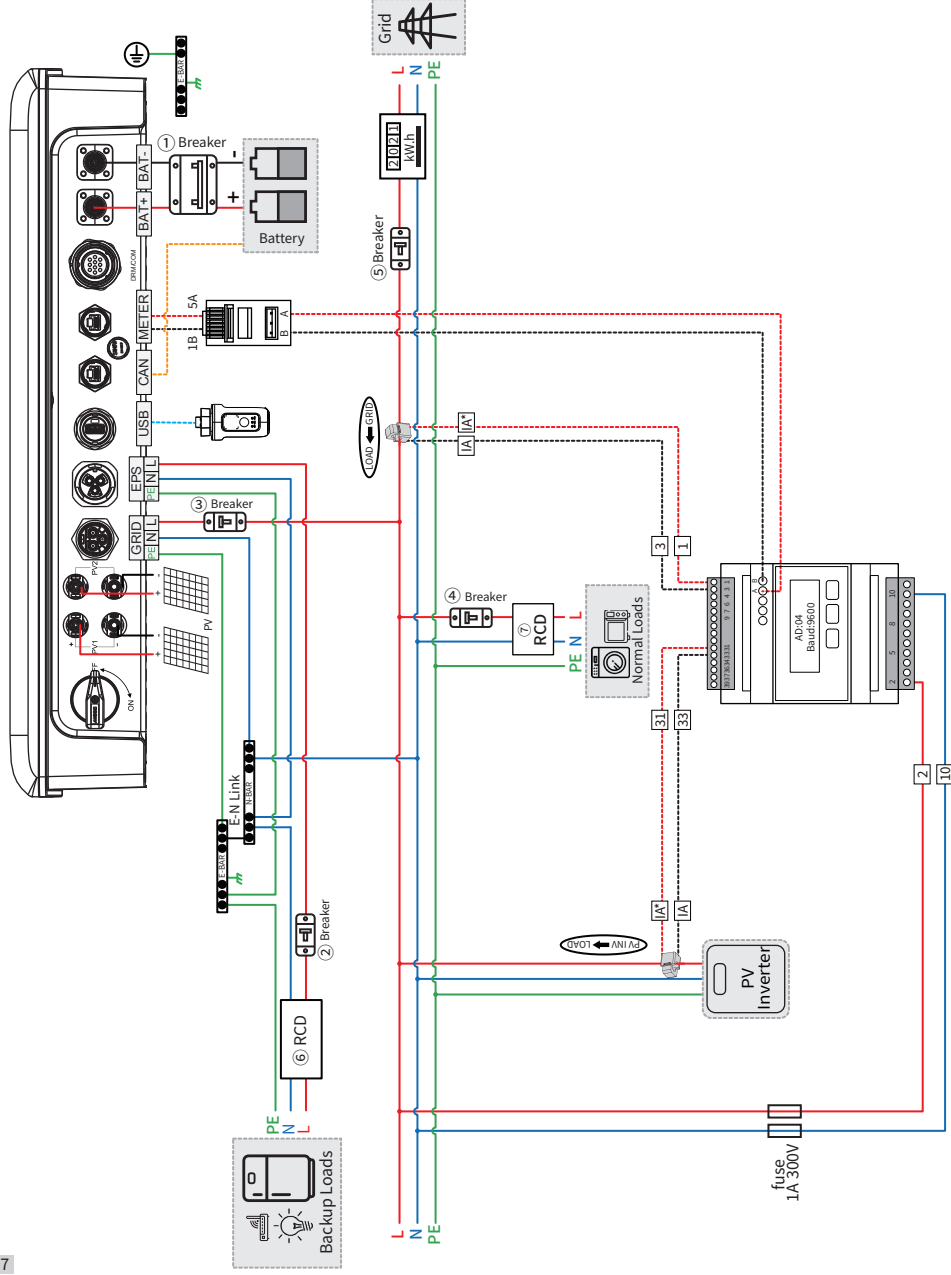
Note: The back-up PE line and earthing bar must be grounded properly and effectively. Otherwise the back-up function may be abnormal when the grid fails.



System Connection Diagrams

Note: According to Australian safety regulations, the neutral wires of the on-grid side and the back-up side must be connected together. Otherwise, the back-up function will not operate correctly.

This diagram is an example for an application that neutral connects with the PE in a distribution box (with smart meter). Applicable in countries such as Australia, New Zealand, South Africa, etc. Please follow the local wiring regulations!



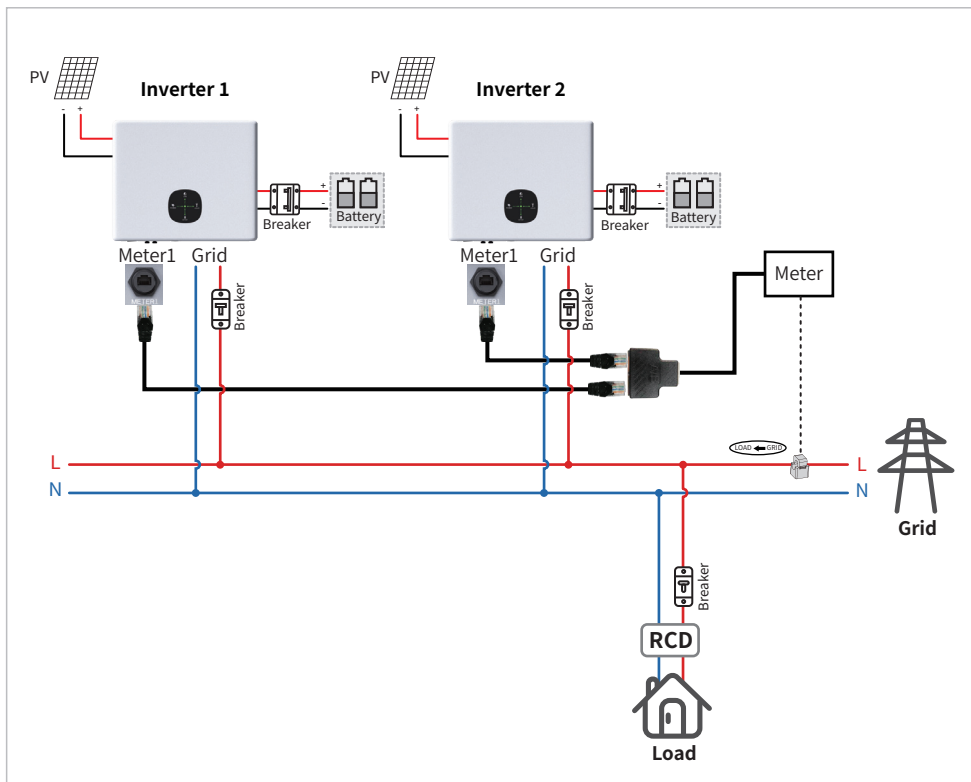
Model	①	②	③	④	⑤	⑥	⑦
H3000-EU	180A/100V DC Breaker	20A/230V AC Breaker	40A/230V AC Breaker	Depends on Loads	Main Breaker	40A/230V 30mA RCD (Type A)	63A/230V 30mA RCD (Type A)
H3600-EU	180A/100V DC Breaker	20A/230V AC Breaker	40A/230V AC Breaker				
H4000-EU	180A/100V DC Breaker	25A/230V AC Breaker	40A/230V AC Breaker				
H4600-EU	180A/100V DC Breaker	32A/230V AC Breaker	40A/230V AC Breaker				
H5000-EU	180A/100V DC Breaker	40A/230V AC Breaker	63A/230V AC Breaker				
H6000-EU	180A/100V DC Breaker	40A/230V AC Breaker	63A/230V AC Breaker				

Note

- If the battery has integrated a readily accessible internal DC breaker, then no additional ① DC breaker is required.
- The use of ⑥ ⑦ 30mA RCD is recommended but not mandatory, please comply with local regulations for the system installation.

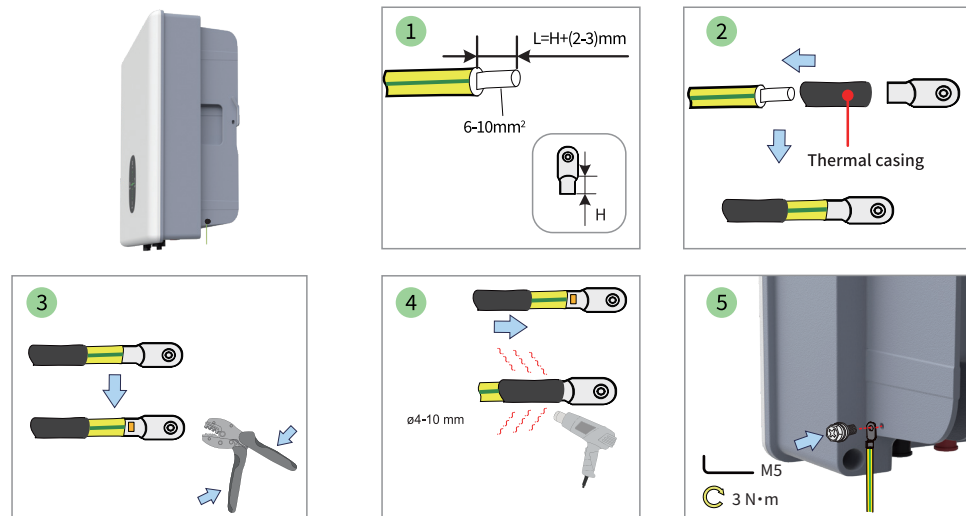
Parallel Connection

The inverter only supports grid-connected parallel connection. Up to 2 inverters can be connected in parallel.

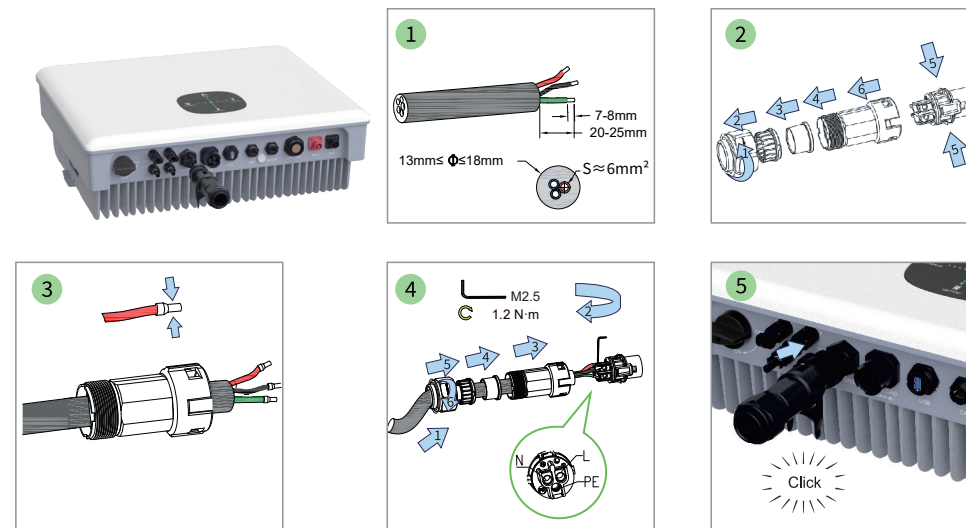


3. Electrical Connection

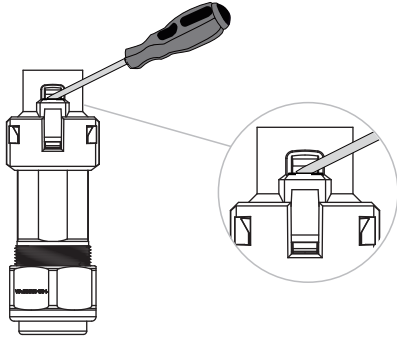
Step 1 Grounding Protection Wire



Step 2 Grid

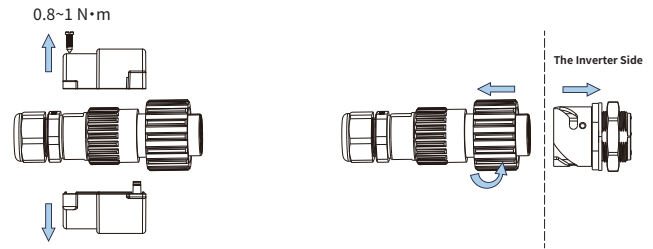


Remove the Grid plug

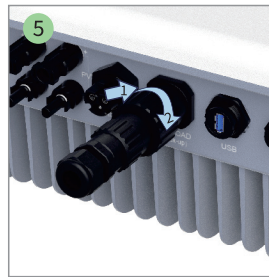
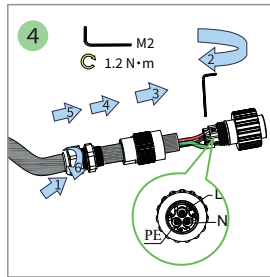
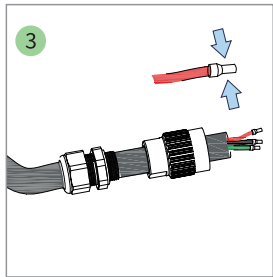
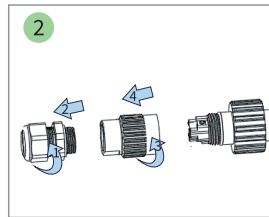
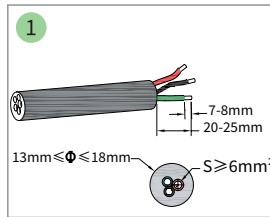


Warning: Disconnect power from grid and equipment, and remove grid terminals by professional installer.

Remove the EPS plug



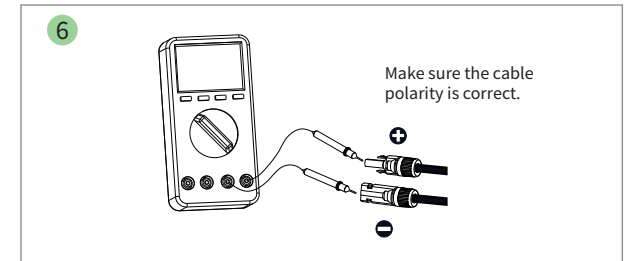
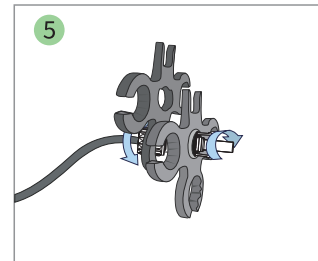
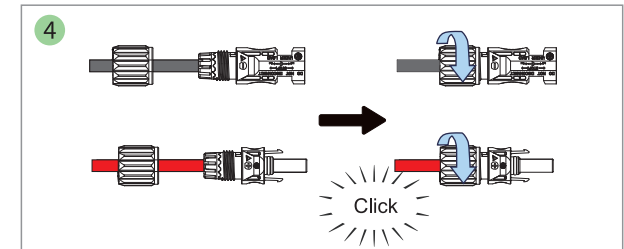
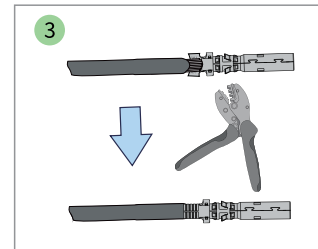
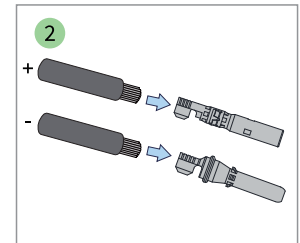
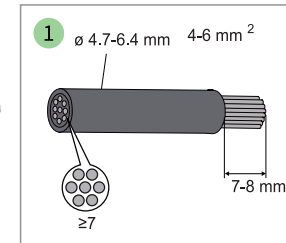
Step 3 EPS

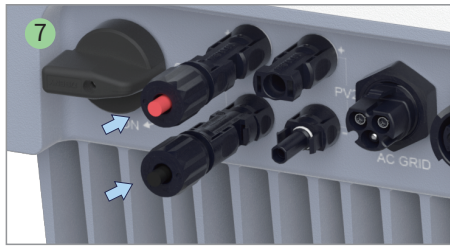


• After the AC Grid is installed, a protective cover must be added.

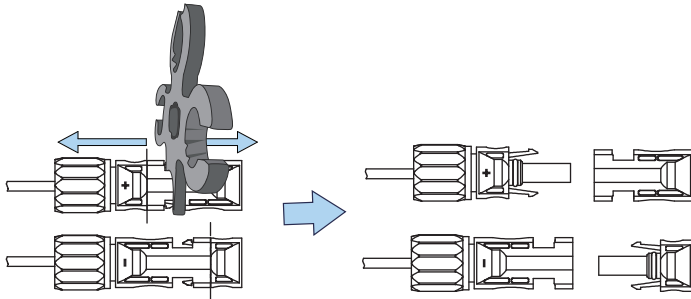


Step 4 PV



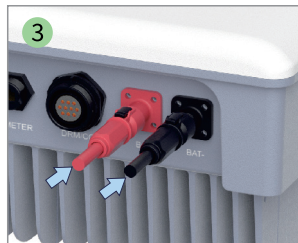
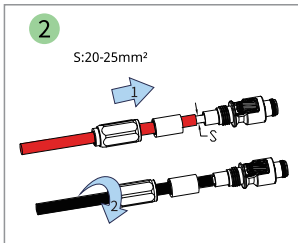
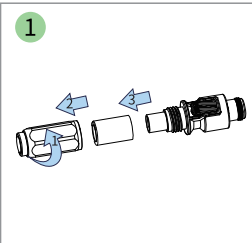
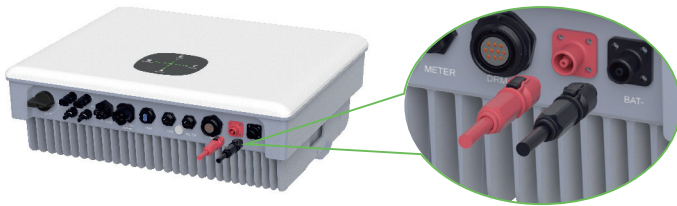


Remove the PV plugs



Warning: Please use professional tools to remove the PV plug.

Step 5 Battery



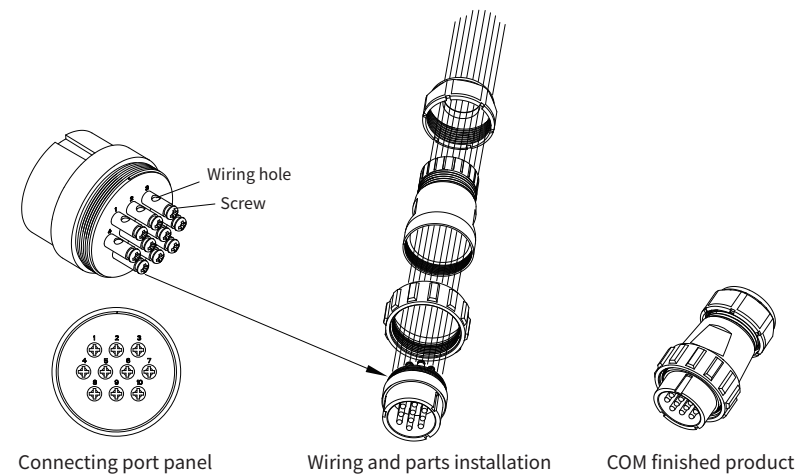
Step 6 COM Connection Mode



1	COM/DRM0
2	REFGEN
3	DRM4/8
4	DRM3/7
5	DRM2/6
6	DRM1/5
7	EPO+
8	EPO-
9	RLY_+12V (Wet Contact +)
10	RLY (Wet Contact -)

1. Route the signal cable through the terminal protection cover, as shown in the figure.
2. Insert the signal cable into the wiring hole and tighten it with Phillips screwdriver.
3. Install and lock the parts of the connector according to the figure.

Internal wiring diagram of COM connector:



Step 7 CT (Current Connections) and BMS

The inverter BMS Port/Smart Meter/CT Detailed pin function.

Pin	Color	CAN(BMS)	METER (Smart Meter)	CT
1	Orange and white	WAKE_UP	485_B	NC
2	Orange	GND	NC	IGRID_LOADN
3	Green and white	NC	ATE 485_B	NC
4	Blue	CANH	NC	NC
5	Blue and white	CANL	485_A	NC
6	Green	NC	ATE 485_A	NC
7	Brown and white	NC	NC	NC
8	Brown	NC	NC	IGRID_LOADP

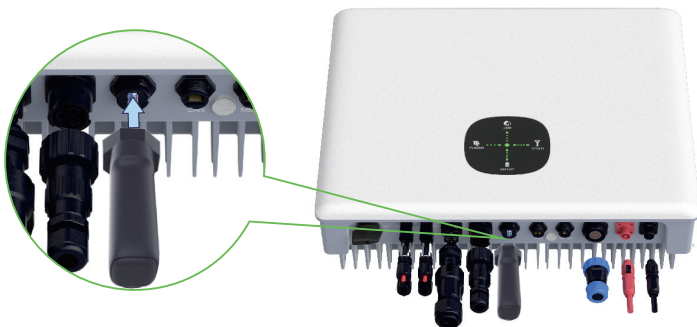


The CAN port connects to the BMS

The METER port connects to a smart electricity meter or current transformer

Step 8 WiFi Module Connection

The Wi-Fi communication function is only applied to WiFi Module.



4. Online Setting

Hinen Solar is designed to help end users monitor and manage their inverter systems more conveniently. Hinen Install, tailored for installation personnel, offers comprehensive features for installation, debugging, configuration, and troubleshooting, all protected by an authorized password or Hinen authorization to ensure secure operations. Both apps enhance the user experience with a simple, intuitive interface and efficient functions, making it easier for users to manage their photovoltaic power generation systems.

You can download and install the app from the app stores or scan the following QR code to download and install the App according to the prompt information.

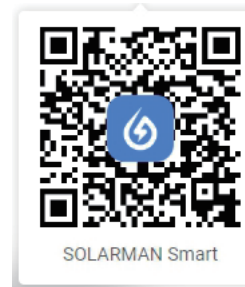


Hinen Install APP Download QR code



Hinen Solar APP Download QR code

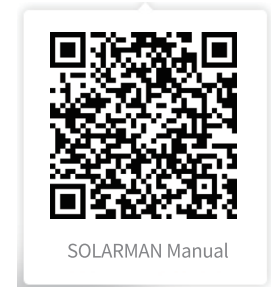
Scan the following QR code to download and install the Solarman App according to the prompt information.



SOLARMAN Smart



SOLARMAN Business



SOLARMAN Manual

<https://www.hinen.com/pages/smart-energy-management-system>